

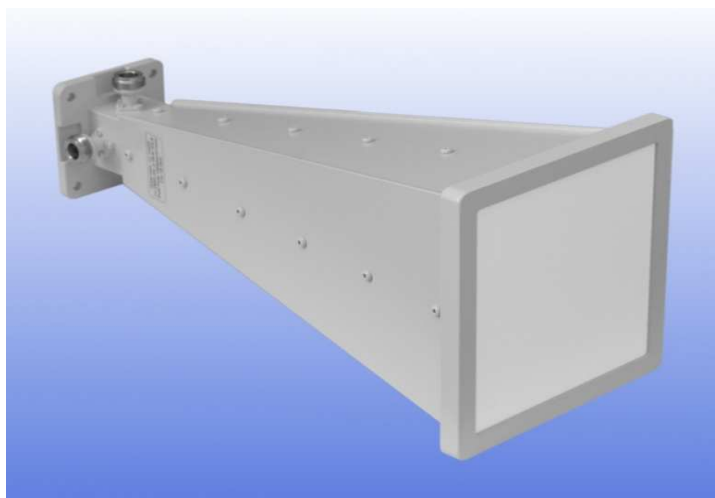


Wide Band Dual Polar Horn 2 to 18 GHz

Catalogue number: **QWH-DL-2-18-N-SG-R**

Q-par reference: **QMS-00474**

Contents: **Summary**
Typical Antenna Gain / Factor
Typical Beamwidth / Patterns
VSWR
Isolation (*between connectors*)



4TECT

ООО «4ТЕСТ»
Телефон: +7 (499) 685-4444
info@4test.ru
www.4test.ru

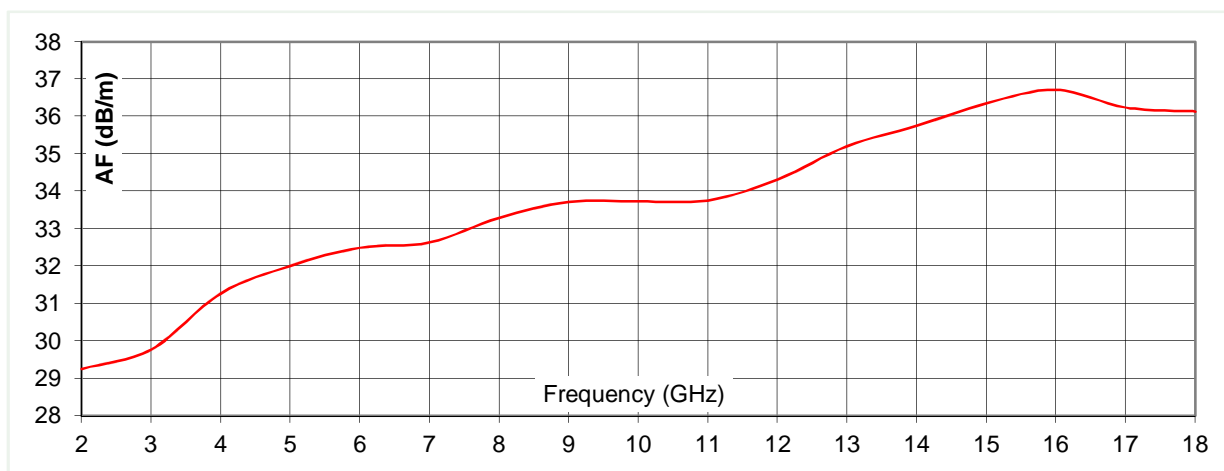
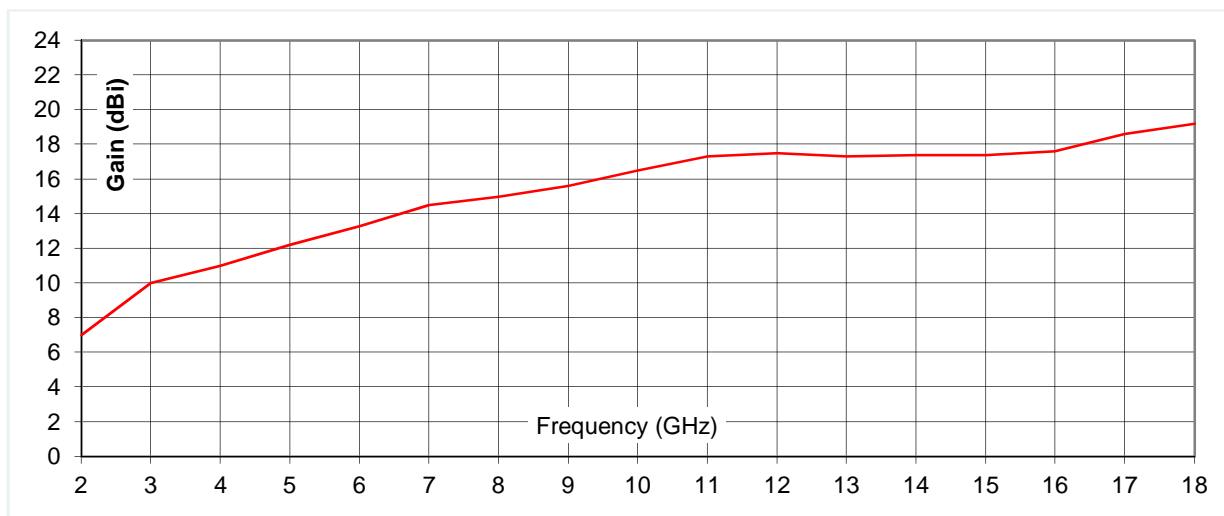
STEATITE
COMPUTING - POWER - COMMUNICATIONS
A Solid State Group Company

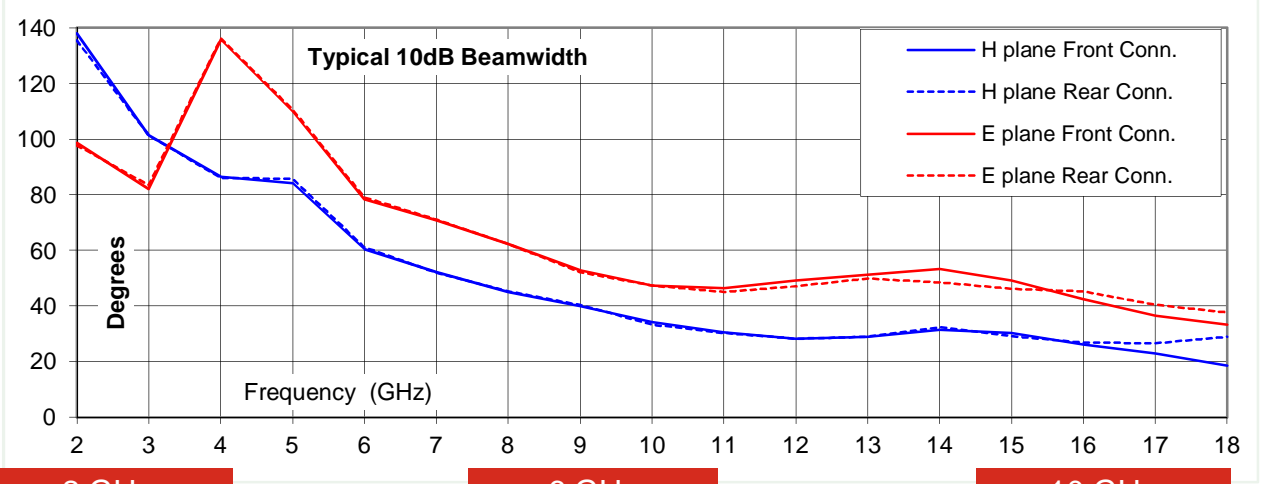
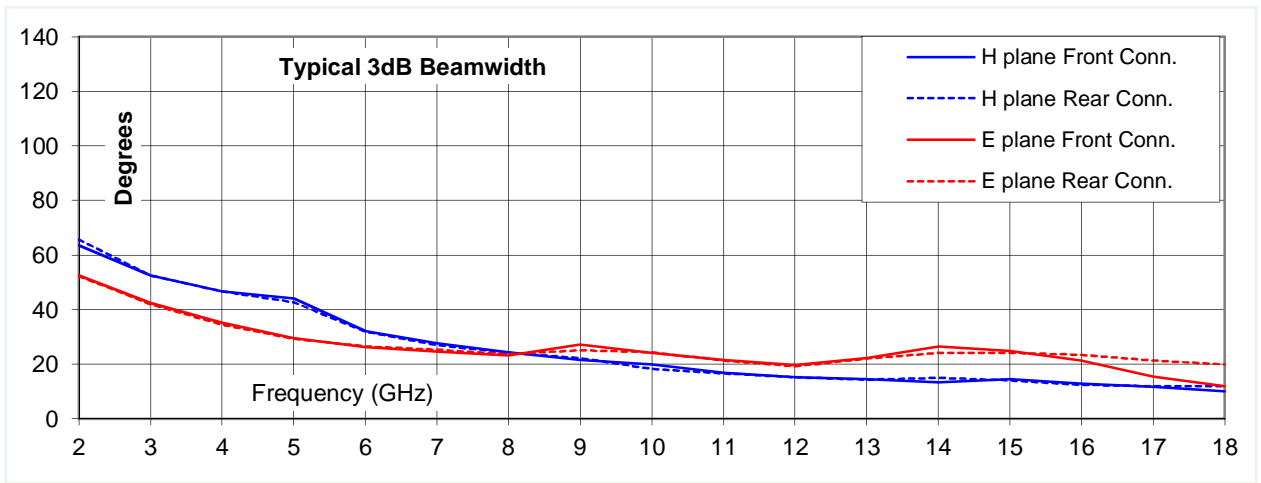
Typical Specification

Frequency	2 to 18 GHz
Connector type	2 x N type jack
Power Handling	40 Watt c.w.
VSWR	Typically < 2.5:1
Isolation	Typically > 30 dB
Gain	7 to 19.2 dBi
Antenna Factor	29 to 37 dB/m
3dB Beamwidth	10 to 67 degrees
10dB Beamwidth	18 to 138 degrees
Weight	938 g nominal
Size- max.	130 mm x 130 mm external aperture x 293 mm long
Mounting	Mounting Plate 64 mm x 64 mm with 4 holes, diameter 5 mm, 50 mm centres
Construction	Composite aluminium and plastic, painted.

Typical Antenna Gain / Factor

This is calculated by reference to standard gain horn antennas, and cross checked with reference to the antenna beamwidth, with an estimated error of +/- 0.8dB.

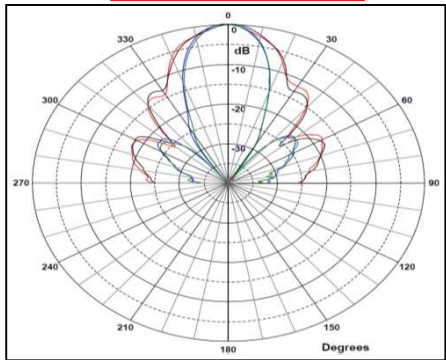
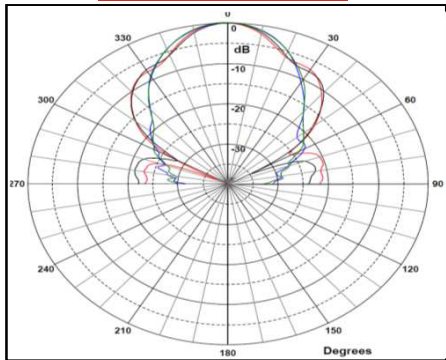
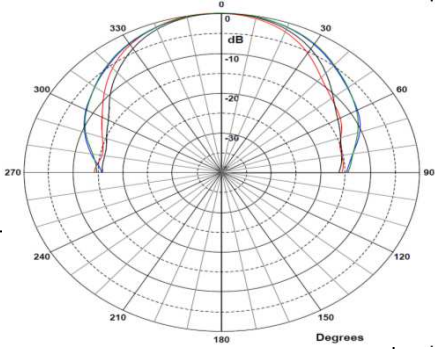




2 GHz

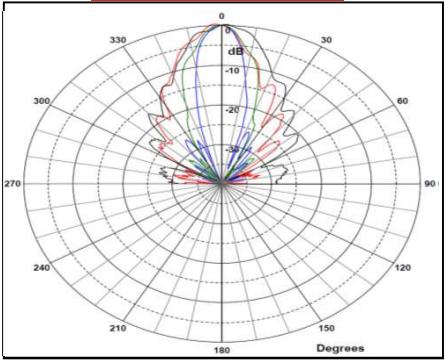
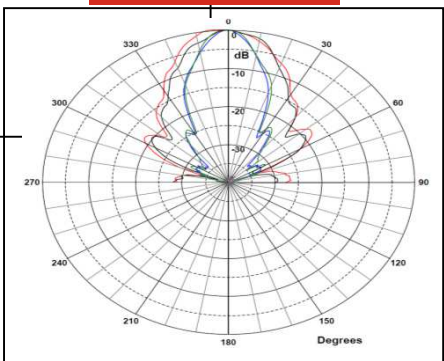
6 GHz

10 GHz



14 GHz

18 GHz



Red & Black = E plane cut, Blue & Green = H plane cut

